

## LED module 10W DALI 3000K

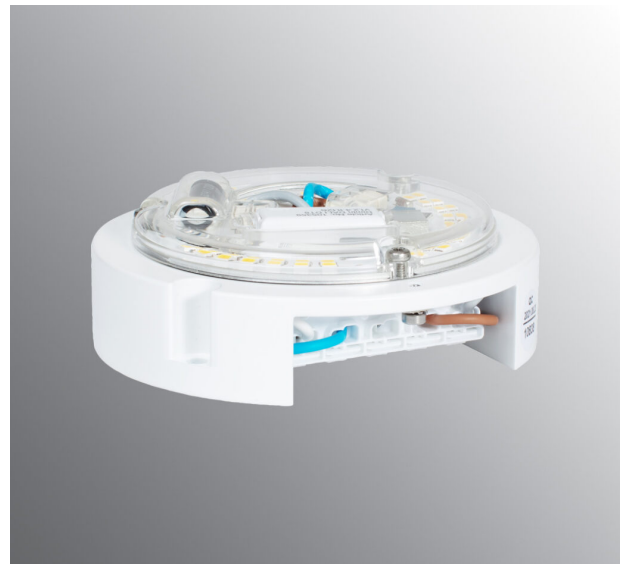
A DALI LED module developed for Ifö Electric's all sockets with 123 mm thread. You can easily replace an existing light socket with a LED module by breaking the current, unscrew the old composure and attach the LED module.

EAN / GTIN	7312905406225
E-number	8245088
Article no.	1-54062-1930



### Specification

Weight	0,24 kg
Diameter (mm)	103
Height (mm)	32
Effect	10W
Lumen, light source	1200lm
Colour temperature	3000K
MacAdam	3 SDCM
Life span	L80/B10: 47 000 h
Ra	Min 90
Rated voltage	230V
Dimmable	DALI PHM126 min 3%
Insulation class	I
Energy class	E
Cable area, max	Max 5x2,5mm <sup>2</sup>
Bridging	Yes
Connection	Terminal block
Family	Light sources



### Luminaire specific information

The LED module is adapted for our bases with thread 123,5 mm. It works with all shades with this thread size. Connecting the power cables is done through terminal block on the module for max 3x2,5mm<sup>2</sup>. Bridging is possible.

*\*\* The device must under no circumstances be connected to the same phase as a magnetic ballast or other older fluorescent luminaires as these luminaires can generate overvoltage transients outside of EU regulatory standards when switched off or on. The luminaire can permanently damage or completely cease to function when connected.*

*Subject to errors in text. We reserve the right to change the technical specifications (without notice).*